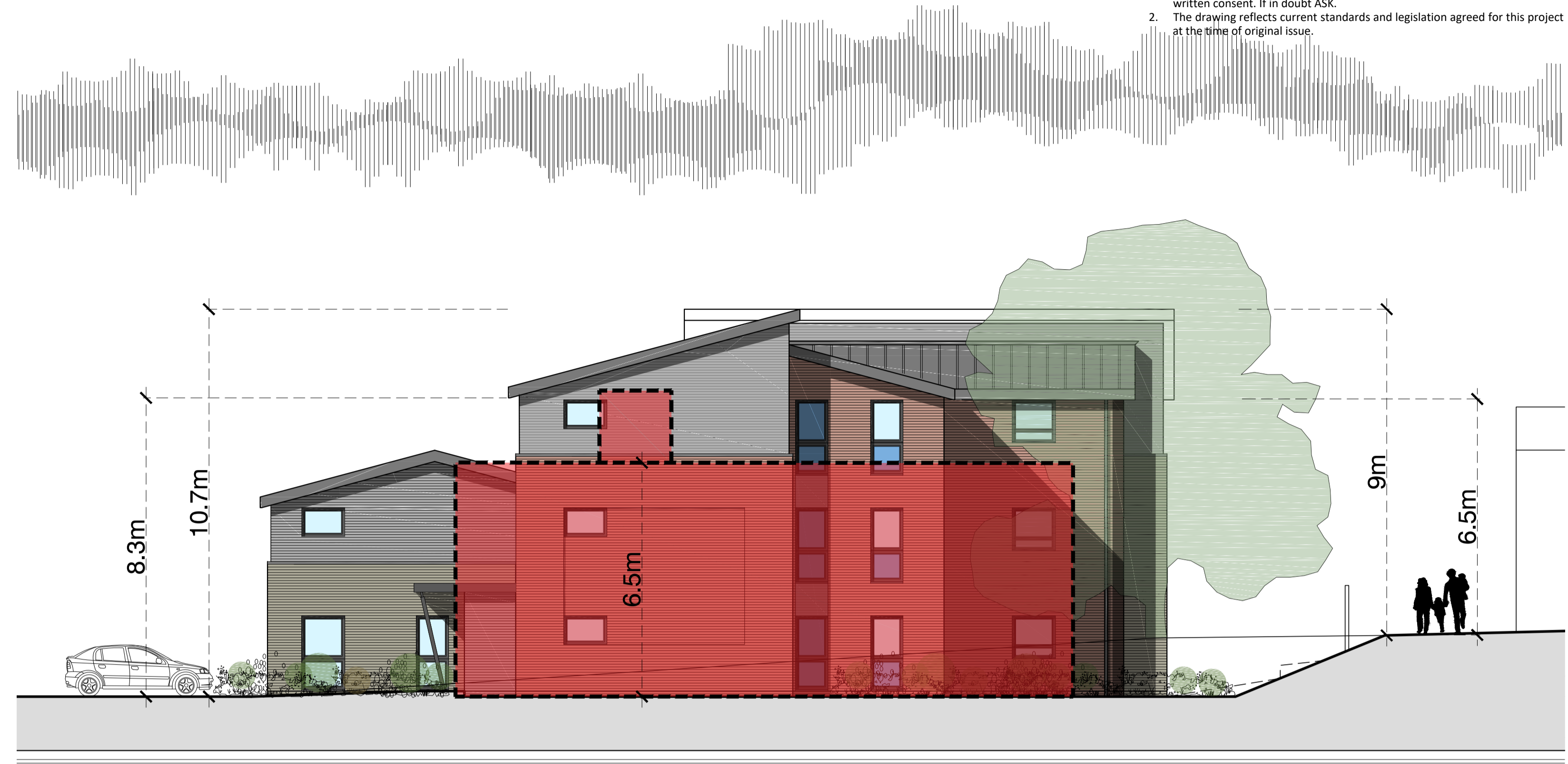


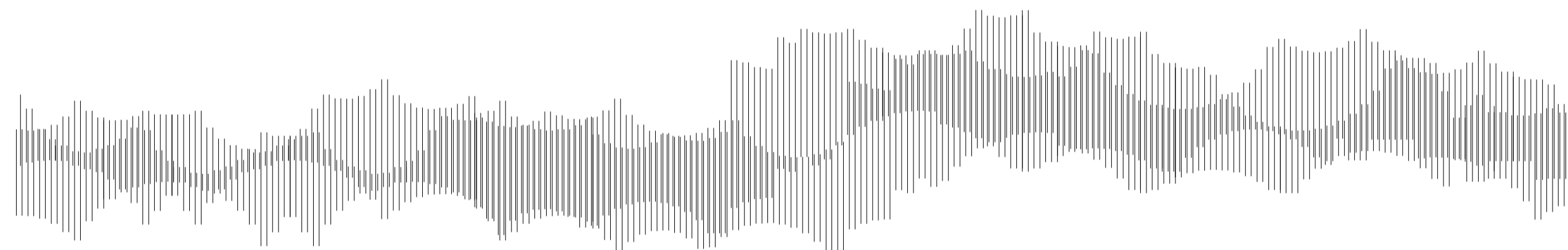
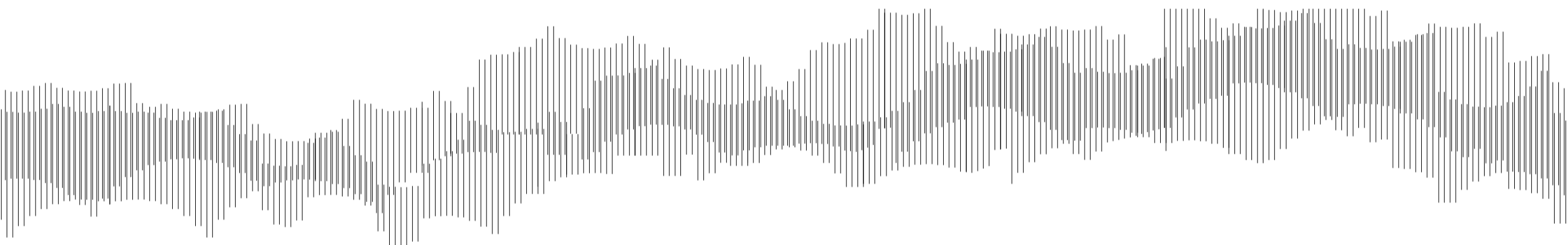
GENERAL NOTES:
 1. This drawing is the copyright of KSA Architects Ltd and may not be copied, altered or reproduced in any form or passed on to a third party without written consent. If in doubt ASK.
 2. The drawing reflects current standards and legislation agreed for this project at the time of original issue.



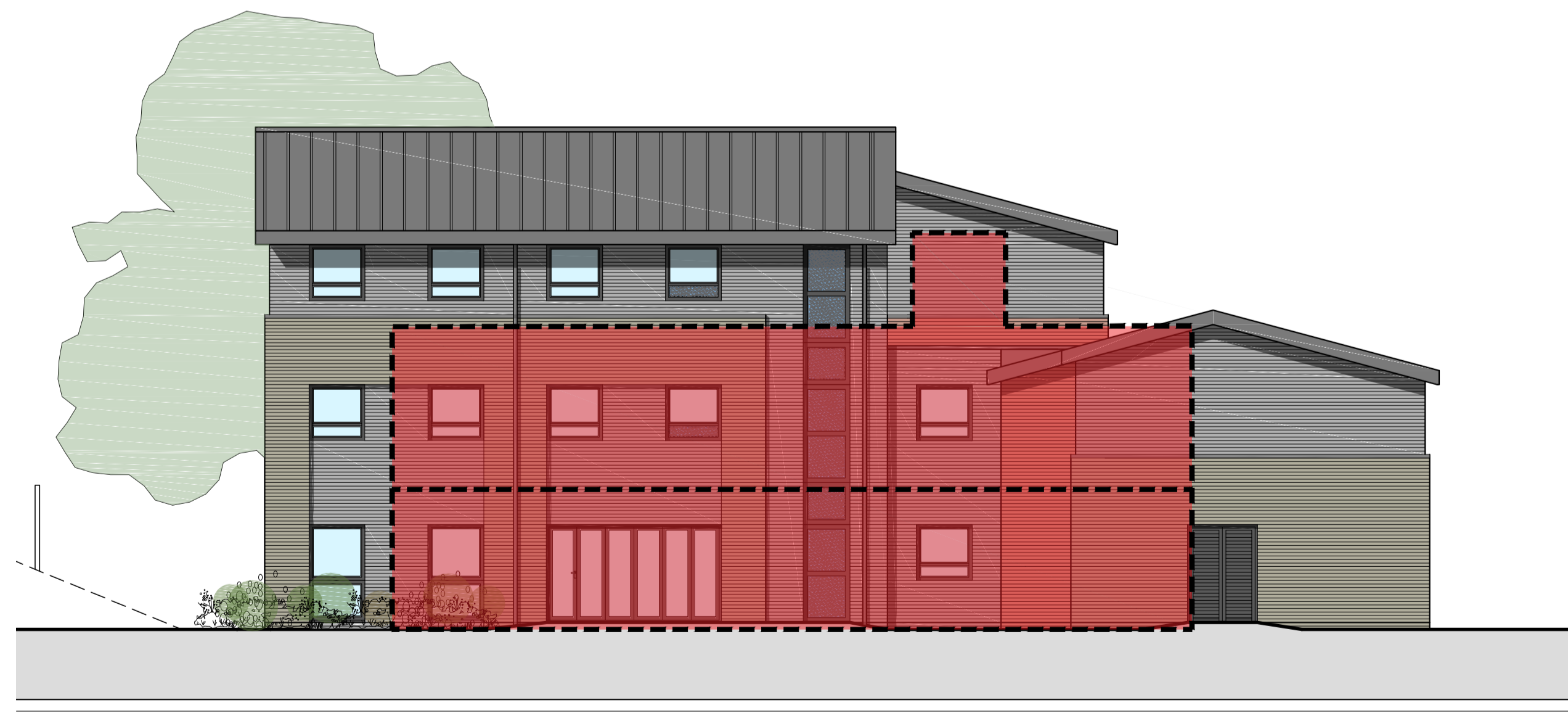
South Elevation
(Main entrance)



East Elevation
(Culver Road)



North Elevation
(Footpath)



West Elevation
(Courtyard)

Rev	Date	Description	Rev By	Ckd By
A	25.06.21	Planning Submission.	LD	DRK

KSA The people orientated placemakers.

Client
TWO SAINTS

Project
180 Culver Road, Basingstoke

Drawing Title
Proposed Elevations WITH EXISTING

Drawing Status	Scale
PLANNING	1:100 @ A1
Document Ref.	Revision
1212 PD030	A
	Drawn By
	LD

